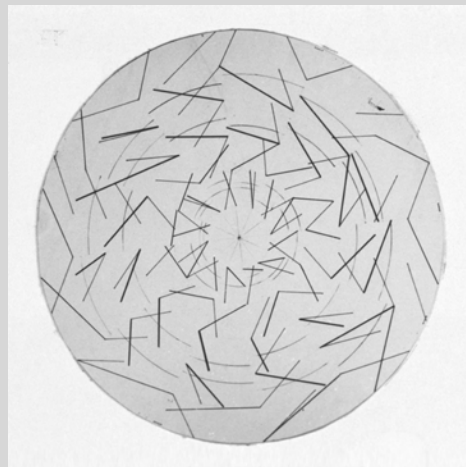
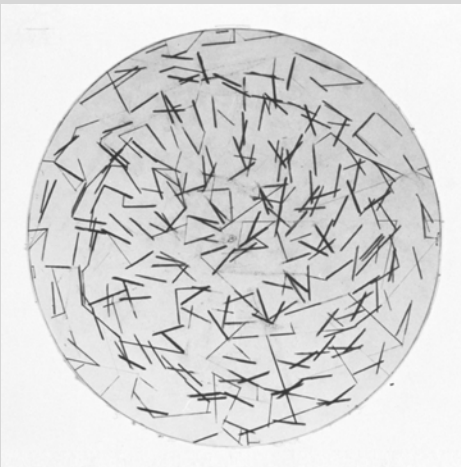


PROJECTED LIGHT COMPOSITIONS



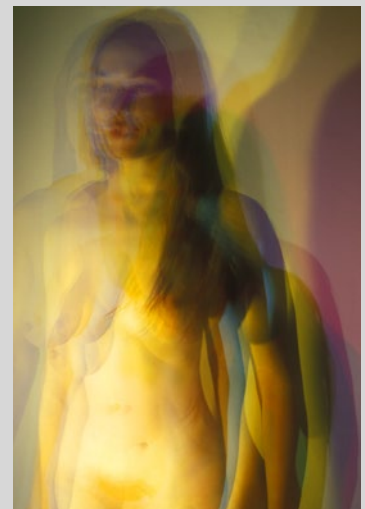
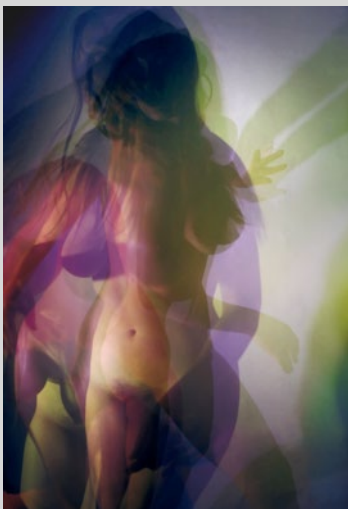
1966 Projected Images - Printer's ink on glass slides - Used in conjunction with multiple projectors using film, liquids, motors, variable speed strobe lights and variable shutters to create stage effects for live performances.

STROBOSCOPIC WORKS



1968-69 - Stroboscopic Drawings and Collage – Graphite on paper, color aid paper on board, variable speed motor, variable speed strobe lighting, color gels. Designed to be viewed while rotating under variable speed strobe lighting. Various color gels applied interactively during each performance.

STROBOSCOPIC FIGURE STUDIES



1968-69 Stroboscopic Figure Photographs – Color, B&W film, color gel wheel, variable speed strobe lighting. Images composed in-camera. Stroboscope speed was varied and a gel wheel rotated during each choreographed sequence.